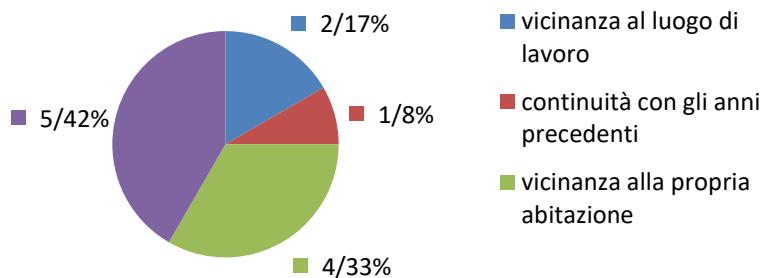
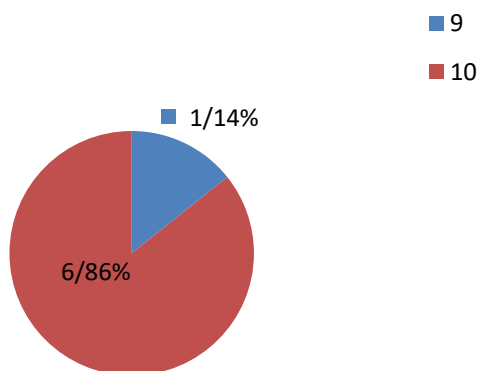


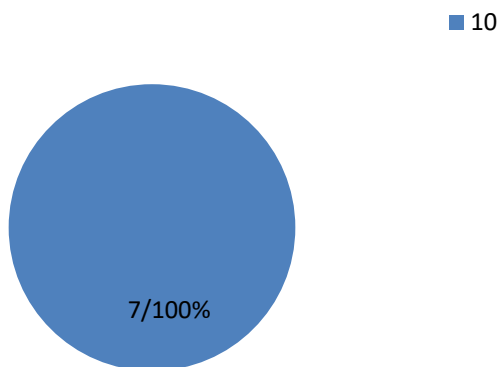
### Quali sono stati i principali motivi per i quali ha scelto il servizio educativo frequentato da suo/a figlio/a? [fino a 3...



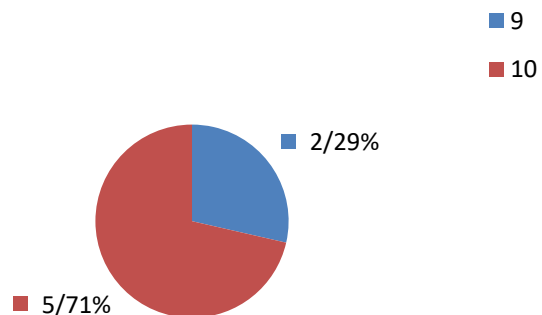
### L'atmosfera che si respira ( 7 risp. )



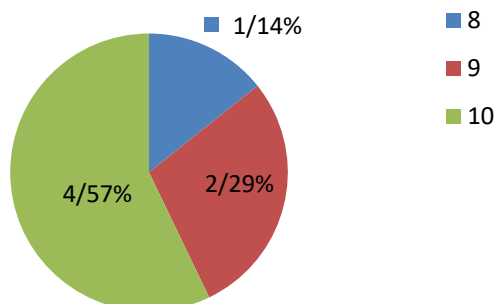
### Le attività proposte ( 7 risp. )



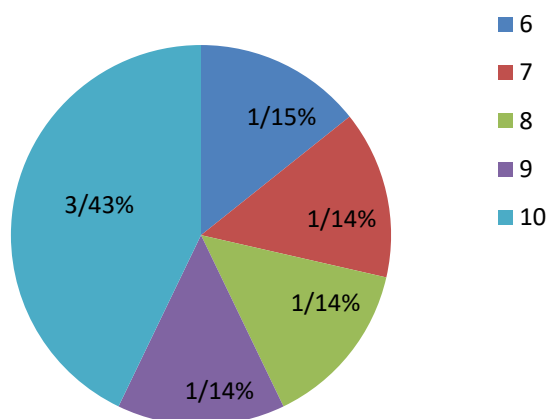
### Le relazioni tra insegnanti/educatori e bambini ( 7 risp. )



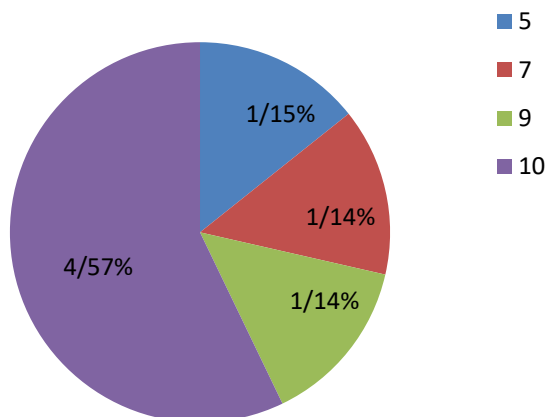
### Le relazioni tra operatori/ausiliarie e bambini ( 7 risp. )



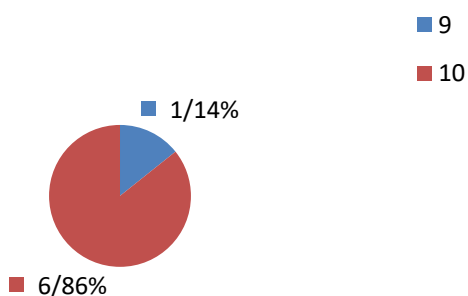
### Riunioni on line ( 7 risp. )



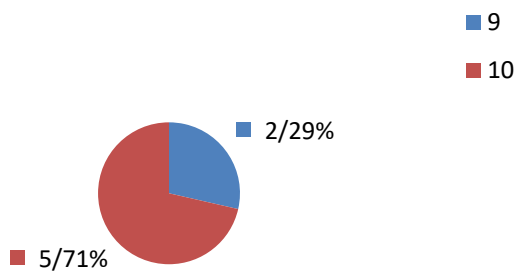
### Laboratori ( 7 risp. )



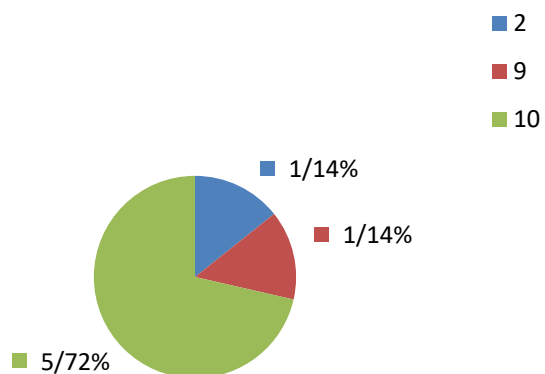
### L'adozione dei dispositivi organizzativi e igienico sanitari anti contagio? ( 7 risp. )



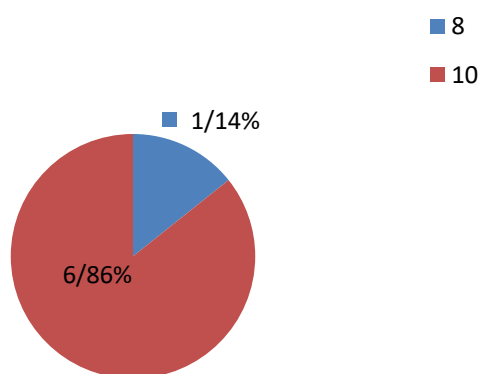
### L'organizzazione del servizio in seguito all'adeguamento dei protocolli anti Covid...



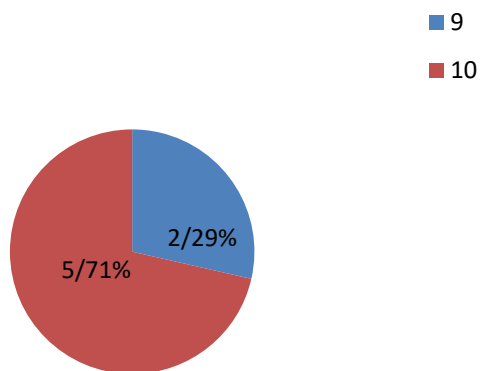
### Gli spazi e gli arredi della scuola ( 7 risp. )



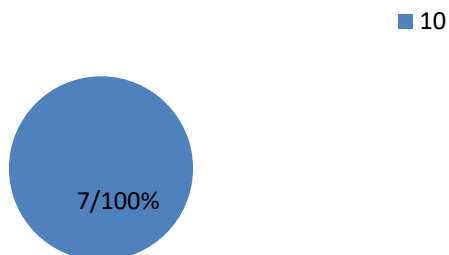
### L'utilizzo degli spazi esterni ( 7 risp. )



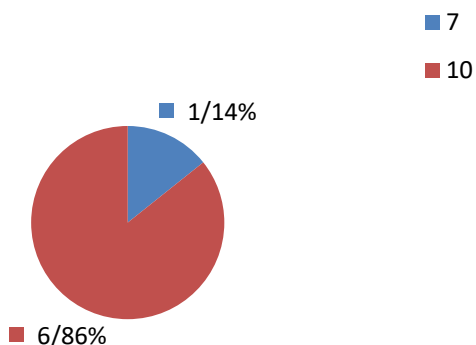
### La scelta del menù ( 7 risp. )



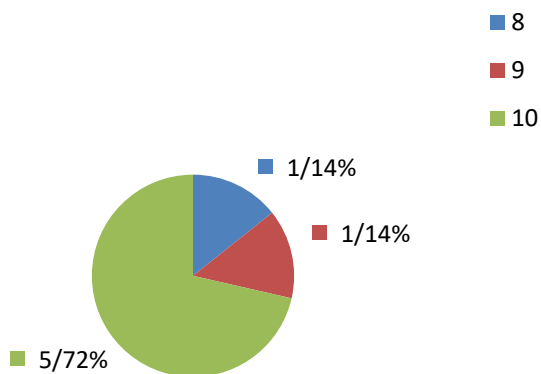
### L'esistenza della cucina interna per la preparazione dei pasti ( 7 risp. )



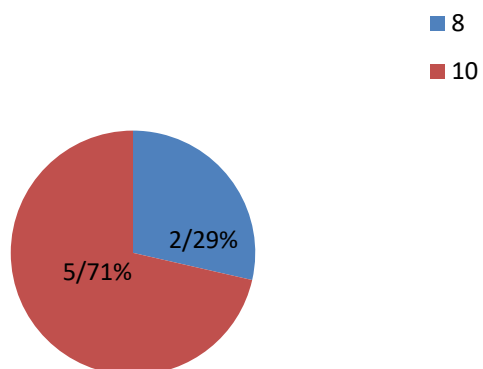
### La pulizia e l'igiene degli spazi interni al servizio ( 7 risp. )



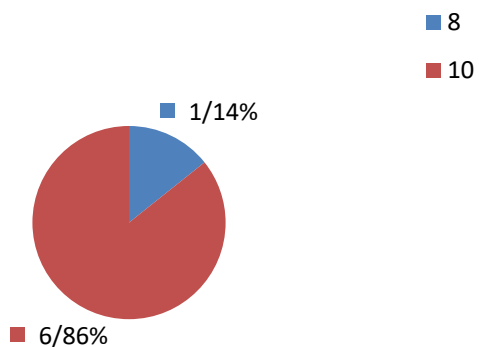
### Il colloquio iniziale ( 7 risp. )



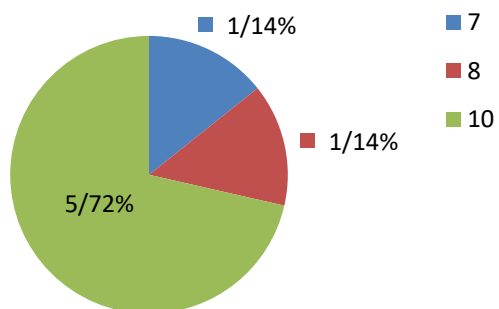
### Il processo di inserimento ( 7 risp. )



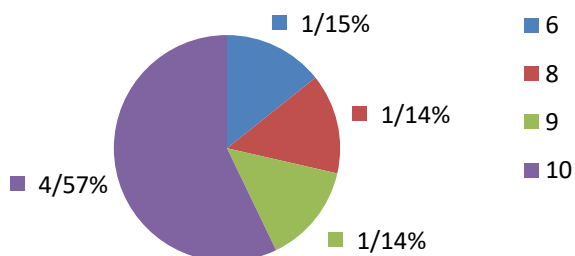
### Le relazioni con le insegnanti/educatori ( 7 risp. )



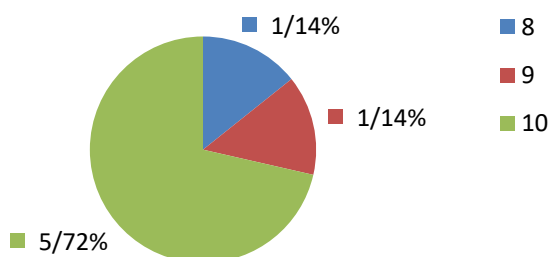
### Le relazioni con gli operatori (ausiliarie) ( 7 risp. )



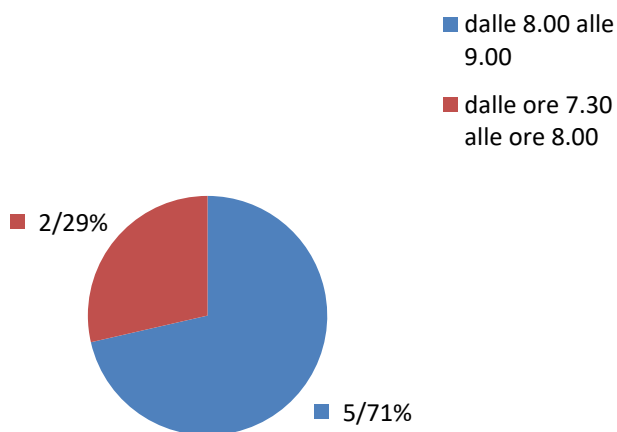
### Le riunioni di sezione e gli altri incontri (assemblee, comitato...) ( 7 risp. )



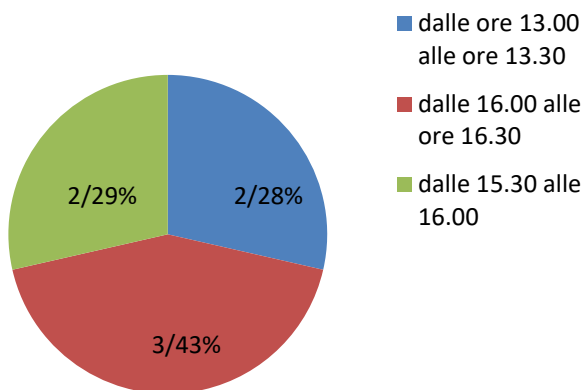
### Il ruolo del/dei referenti nell'organizzazione e gestione del servizio educativo ( 7 risp. )



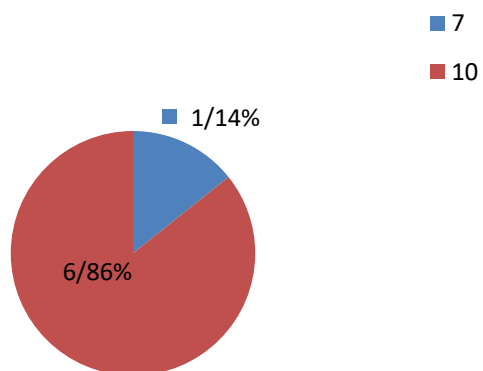
### Entrata ( 7 risp. )



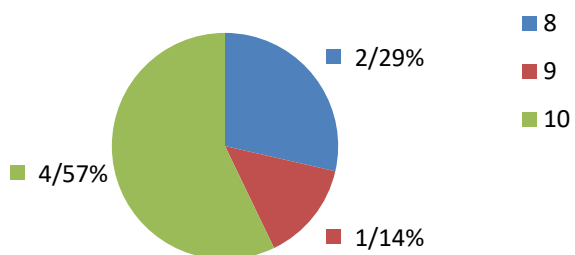
### Uscita ( 7 risp. )



### Modalità di accoglienza ( 7 risp. )

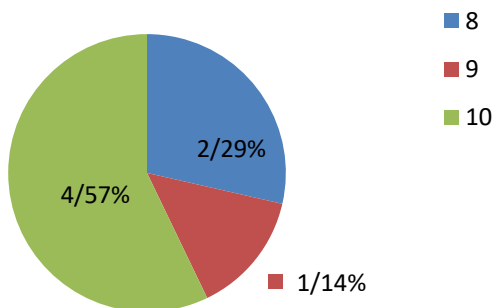


### Informazione sulle modalità di iscrizione e fruizione dei servizi ( 7 risp. )

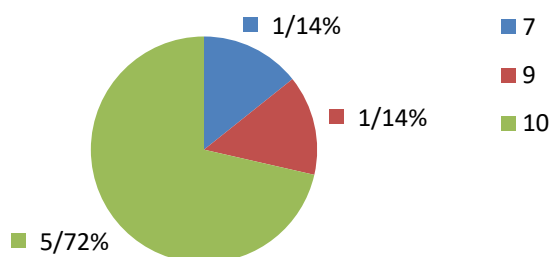




### La disponibilità e la competenza degli impiegati ( 7 risp. )



### La risposta da parte del coordinamento pedagogico a richieste specifiche di carattere...



### Complessivamente come si ritiene rispetto alla scelta del servizio educativo effettuata...

