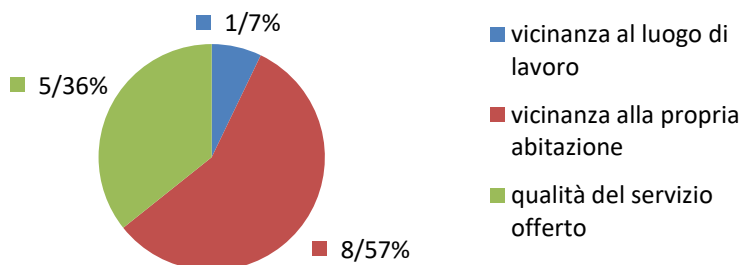
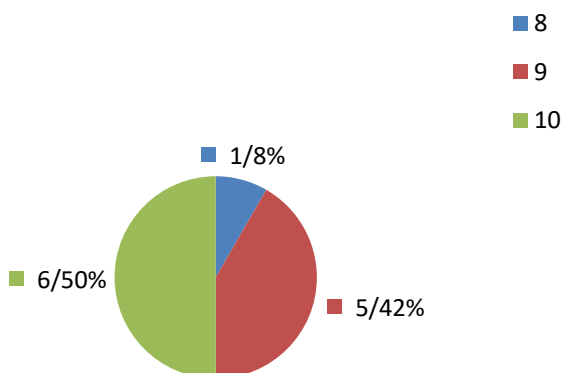


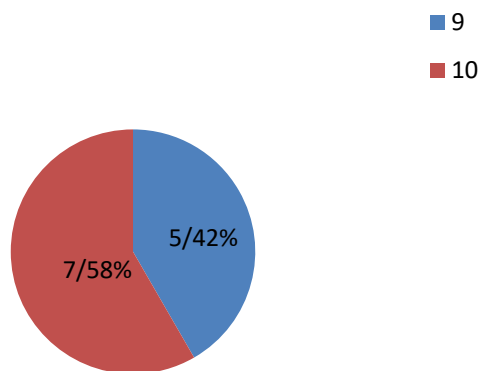
### Quali sono stati i principali motivi per i quali ha scelto il servizio educativo frequentato da suo/a figlio/a? [fino a 3...



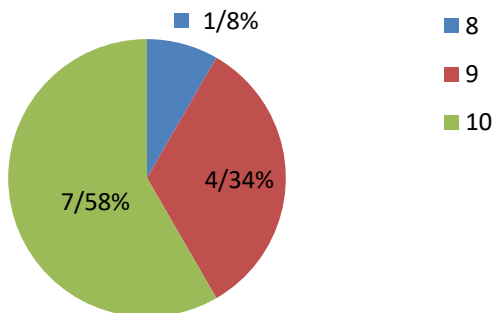
### L'atmosfera che si respira ( 12 risp. )



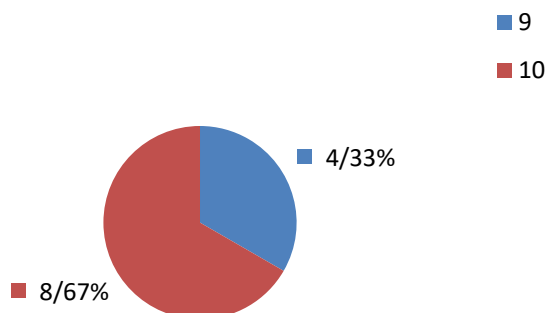
### Le attività proposte ( 12 risp. )



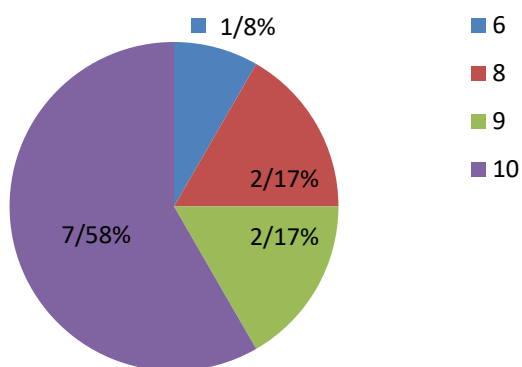
### Le relazioni tra insegnanti/educatori e bambini ( 12 risp. )



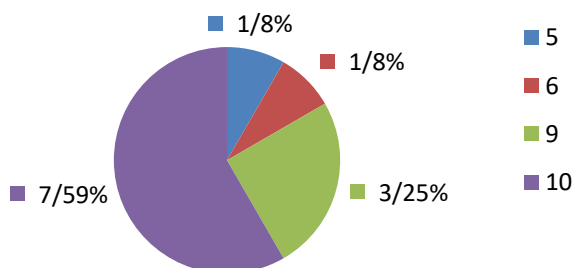
### Le relazioni tra operatori/ausiliarie e bambini ( 12 risp. )



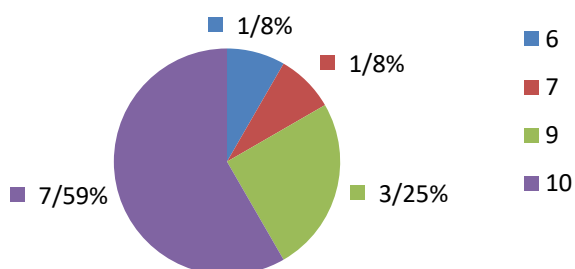
### Riunioni on line ( 12 risp. )



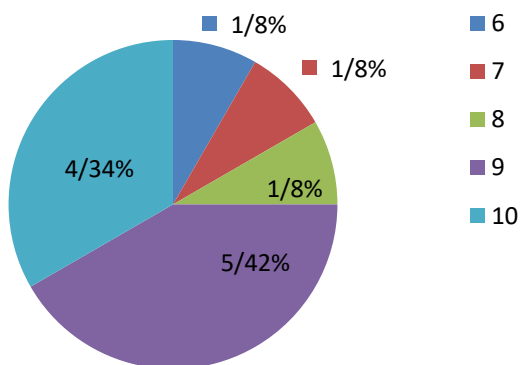
### L'organizzazione del servizio in seguito all'adeguamento dei protocolli anti Covid...



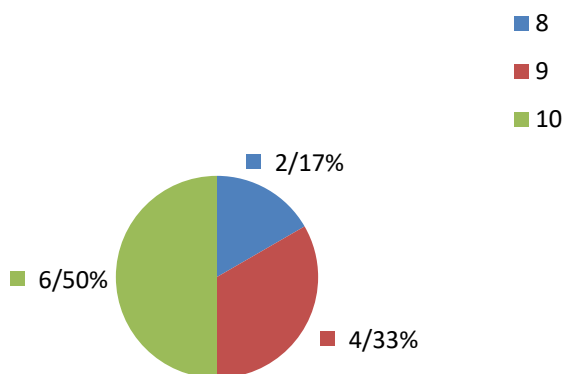
### L'adozione dei dispositivi organizzativi e igienico sanitari anti contagio? ( 12 risp. )



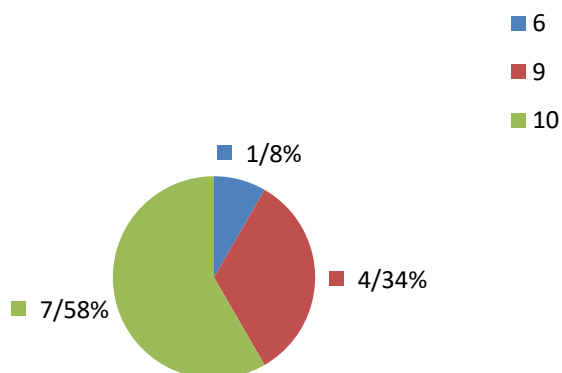
### Gli spazi e gli arredi della scuola ( 12 risp. )



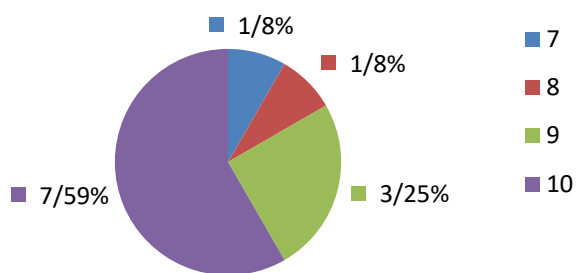
### L'utilizzo degli spazi esterni ( 12 risp. )



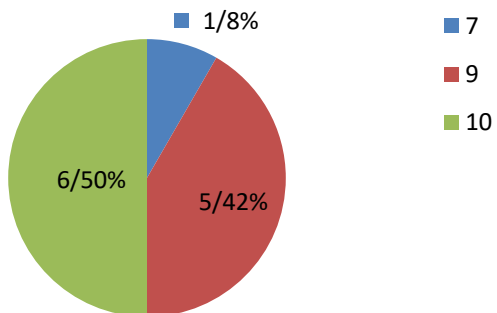
### La scelta del menù ( 12 risp. )



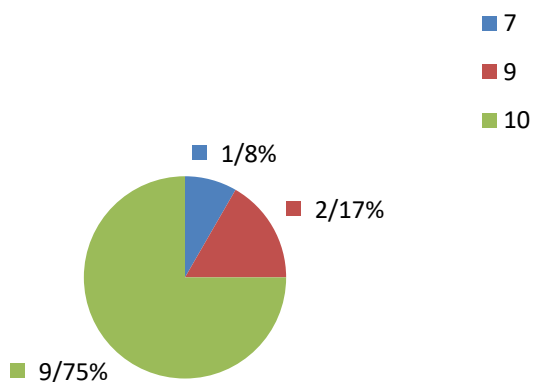
### L'esistenza della cucina interna per la preparazione dei pasti ( 12 risp. )



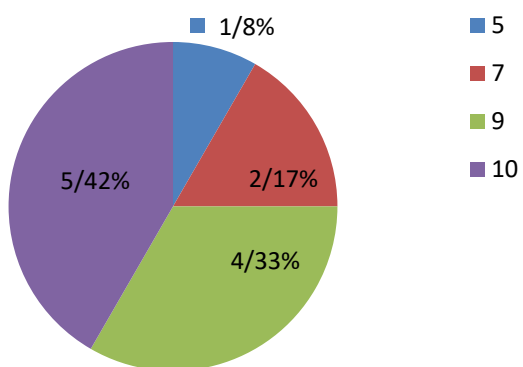
### La pulizia e l'igiene degli spazi interni al servizio ( 12 risp. )



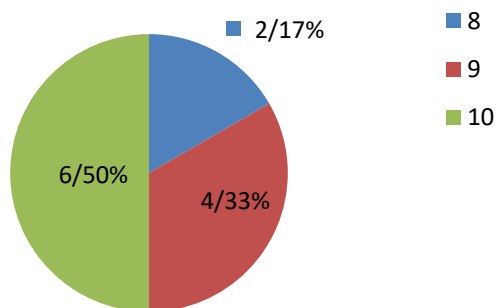
### Il colloquio iniziale ( 12 risp. )



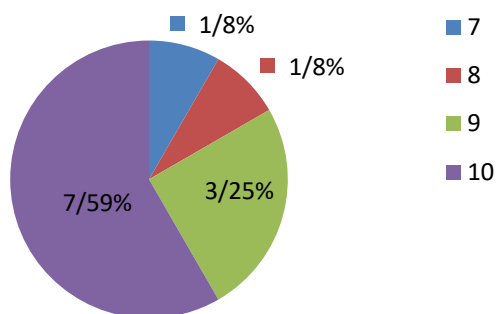
### Il processo di inserimento ( 12 risp. )



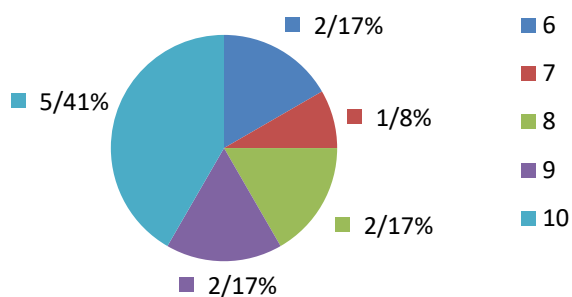
### Le relazioni con le insegnanti/educatori ( 12 risp. )



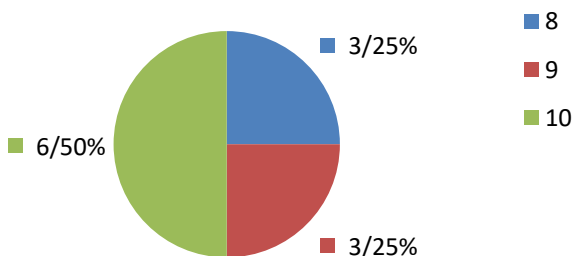
### Le relazioni con gli operatori (ausiliarie) ( 12 risp. )



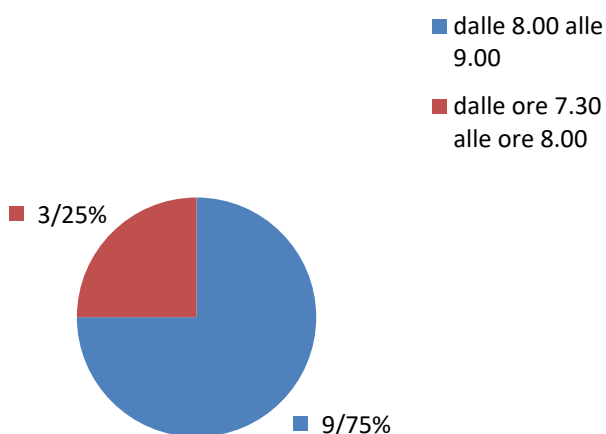
### Le riunioni di sezione e gli altri incontri (assemblee, comitato...) ( 12 risp. )



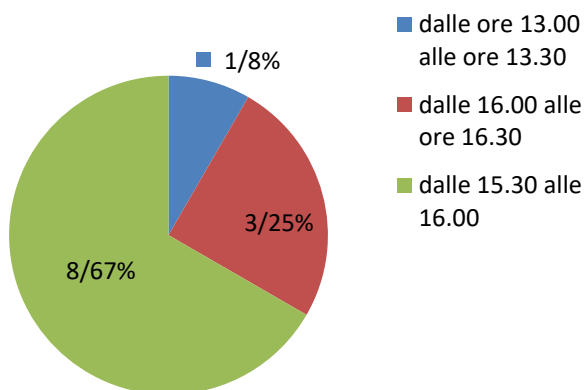
### Il ruolo del/dei referenti nell'organizzazione e gestione del servizio educativo ( 12 risp. )



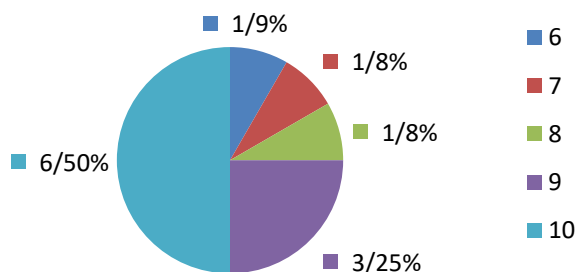
### Entrata ( 12 risp. )



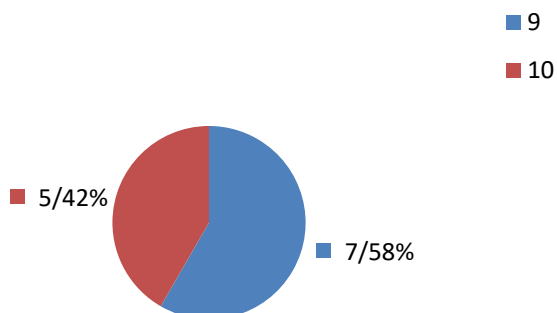
### Uscita ( 12 risp. )



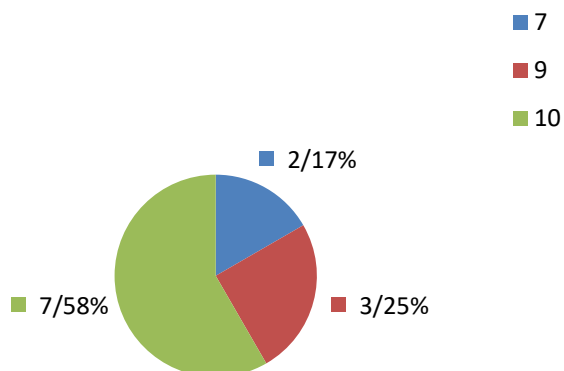
### Informazione sulle modalità di iscrizione e fruizione dei servizi ( 12 risp. )



### La disponibilità e la competenza degli impiegati ( 12 risp. )

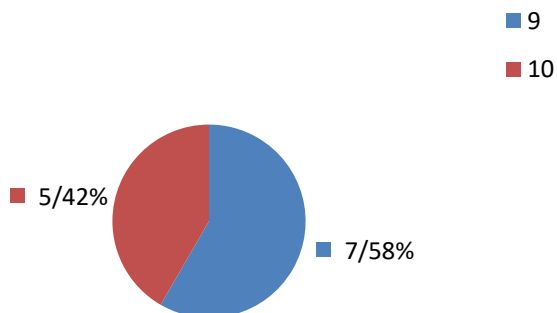


### Modalità di accoglienza ( 12 risp. )

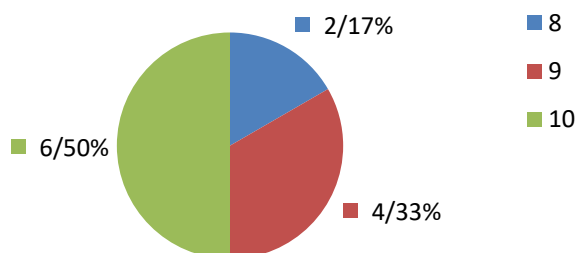




### La disponibilità e la competenza degli impiegati ( 12 risp. )



### Complessivamente come si ritiene rispetto alla scelta del servizio educativo effettuata...



### La risposta da parte del coordinamento pedagogico a richieste specifiche di carattere...

